



SOCIETY OF
ANTIQUARIES
OF LONDON

MUSEUM COLLECTIONS

Information for Applicants

The museum collections support the Society's primary objectives and charitable aims to promote and facilitate research into the history of the United Kingdom and other countries, and to document the development of the discipline of archaeology and related subjects since the Society's foundation in 1707.

An overview of the museum collections

The Society's collections originated at a time before the foundation of the UK's national museums and galleries. Today the Accredited collections of the Society form a key resource for research and learning in archaeology, the decorative and applied arts and architectural history, and the wider study of material culture, as well as objects associated with the development of the Society itself, and its own position as an organisation of historic standing. Although a small collection, it includes objects of national and international importance.

The collections comprise over 45,000 objects stored and displayed across two sites: Burlington House in London and Kelmscott Manor in Gloucestershire.

Burlington House

The collection at Burlington House is pre-eminent for the study of the history of collecting, together with the discipline of archaeology and related historic material culture studies in Britain and other countries. The core collection spans the prehistoric period to the 19th century, and predominantly represent the history, archaeology and art of the British Isles. There are a small number of continental and world culture objects. A core element relate to the Society's own history and development.

Summary:

- Approximately 2000 archaeological artefacts spanning the Prehistoric to the early post-medieval period, collected predominantly from the United Kingdom but also representing archaeological sites and cultures across Europe, the Middle East and Far East. The archaeological collection includes Egyptian, Etruscan and Roman material.
- A small number of monumental brasses dating from the 15th-17th centuries, previously belonging to Warner and Sons (Spitalfields Foundry) and Rev J Fuller Russell (FSA 1853-84).
- Approximately 13,000 monumental brass rubbings dating from the 15th-17th centuries, predominantly from the British Isles, with some continental examples.
- A small but significant collection of clocks, including a gilded brass table clock made by Joseph Zech in 1525 – the oldest known spring-driven clock in England.
- 84 historic oil paintings, including panel paintings of medieval and Tudor monarchs, two of which represent the earliest surviving portraits of two British

- kings, Richard III and Henry VII, and subject paintings, predominantly showing historic views of buildings and ancient monuments.
- Approximately 25,000 prints and drawings, including works commissioned by the Society for its publications, and images of regional landscapes, buildings, and churches, including details of their architectural features.
 - Approximately 11,000 seal impressions, casts, seal matrices and medals, predominantly representing seals and matrices from England (mainly medieval) and some examples of seal impressions and casts from Britain, America, Africa and Europe of different types and periods.
 - Commemorative medals, many representing individuals who played a role in the Society's early history. The medals mainly date from the 16th century onwards.
 - Society regalia representing the history and development of the Society since the 18th century.
 - 18th and 19th century furniture associated with the Society's history both at Somerset House and at Burlington House.

There are approximately 400 objects on long-term loan to museums and galleries around the UK.

Kelmscott Manor

The collection at Kelmscott Manor represents the applied and decorative arts produced or collected by William Morris, Dante Gabriel Rossetti and Jane and May Morris. The collection also relates to the pre-Morris occupancy of the Manor. The collection at Kelmscott is managed by the Heritage Manager (Visitor Experience and Collection).

Policies

The Society operates its museum collections according to a series of policies that have been approved by its trustees and are a requirement of Accreditation. Our policy documents can be viewed on our website at <https://www.sal.org.uk/museum-collection/museum-policies/>

We will be required to submit Accreditation returns during 2019, and the Museum Collections Manager will be responsible for preparing the returns.

Services

The Museum Collections Manager responds to all enquiries on the museum collection at Burlington House, including image requests. There is no 'dedicated' gallery space and so visits to the museum collection are by appointment. These include visits to research objects or materials relating to specific interests and general visits to view the collection. Part of the museum collection is available via an online catalogue

(http://archaeologydataservice.ac.uk/archives/view/SoA_images/search.cfm?null), although records are incomplete.

Management systems

The Society is undertaking a review of management systems for its museum collections and its library collections and will be migrating from its current CMS and LMS (library management system) in the next 12 - 18 months. The Museum Collections Manager will have a key role in this project.

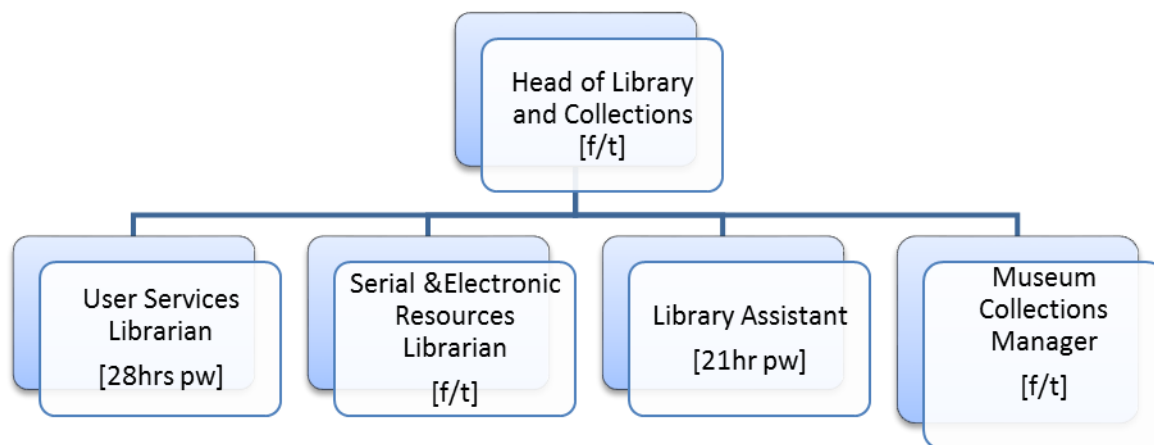
The Library

Recruitment: Information for museum posts July 2018

The Society's library at Burlington House is the country's oldest major research library for archaeology, architectural history and the decorative arts (especially medieval), material culture and the historic environment and contains books, archives, manuscripts, prints and drawings. The library and museum collections are inextricably linked – the Society's archives contain much information about objects in the museum collections; there are drawings, engravings and prints of objects exhibited and presented to the Society.

Library and Collections team

The Museum Collections Manager is a key member of the Library and Collections team, and the sole museum professional in the team. The post holder liaises with library staff on enquiries that overlap, image requests and exhibition loans.



Applications

This document forms part of an application pack which can be downloaded at www.sal.org.uk/vacancies. A job description, person specification and application form are in the application pack.

Please email your completed application form to admin@sal.org.uk or by post to Head of Library and Collections, Society of Antiquaries of London, Burlington House, Piccadilly, London, W1J 0BE.

Applications should be received by Tuesday 21st August 2018 by 5pm

Interviews will take place on Wednesday 29th August