

A close-up photograph of a large, weathered marble column with a fluted base. The column is the central focus, with its surface showing signs of age and wear. In the background, a library interior is visible, featuring other columns, bookshelves, and a balcony with a white railing. The lighting is warm and focused on the column.

# Society of Antiquaries of London

IMPACT REPORT 2009

# Introduction

The Society's 2009 Impact Report reviews our main achievements for the period from October 2008 to September 2009 and outlines our plans for the future. The year has been dominated by the launch of the multi-venue tour of our special exhibition, *Making History: Antiquaries in Britain 1707–2007*, supported by the Heritage Lottery Fund (HLF). This generous grant has enabled us to tell the story of the contribution made by the Society and antiquaries around the country to the formation of our current understanding of the past. We are grateful to our partner museums in Salisbury, Stoke-on-Trent, Sunderland and Lincoln for enabling more than 151,000 people to experience paintings, engravings, manuscripts and archaeological artefacts from the Society's unique collections for the first time.

Despite the uncertain economic climate, the Society continues to invest resources in its core objectives of enhancing public understanding of the heritage, enabling new research and communicating its results through lectures, seminars and publications. This activity helps to build a platform for the next stage of the Society's development as a leading international learned body for the cultural heritage.

As we move into our fourth century, our aim is to create further access to our resources and knowledge base. In order to achieve this, we plan to raise funds that will greatly enhance our library services and facilities and create a new learning centre at Kelmscott Manor, where we can enhance our interaction with a wider audience. We look

## Our key objectives

- 1 Fostering public understanding of the cultural heritage
- 2 Engaging in public policy
- 3 Supporting research and communicating its results

forward to developing our plans and sharing them with you over the course of 2010.

*Geoff Wainwright, President*  
*David Gaimster, General Secretary*  
*(CEO)*

# Major achievements of 2009

- Between October 2008 and January 2010, our *Making History* exhibition toured Salisbury, Stoke-on-Trent, Sunderland and Lincoln, supported by a dedicated website ([www.sal.org.uk/makinghistory](http://www.sal.org.uk/makinghistory)).
- In partnership with Cambridge University Press, we launched an online edition of the *Antiquaries Journal* as part of a

plan to grow the global audience for the journal.

- We published two major research monographs: *Roman Mosaics of Britain. Volume III: South-east Britain*, by David Neal and Stephen Cosh, and *Hill Hall: a singular house devised by a Tudor intellectual* by Paul Drury with Richard Simpson.
- We contributed to the

Henry VIII quincentenary exhibition programme by lending our historic royal portraits for display at Hampton Court, the Tower of London and the British Library.

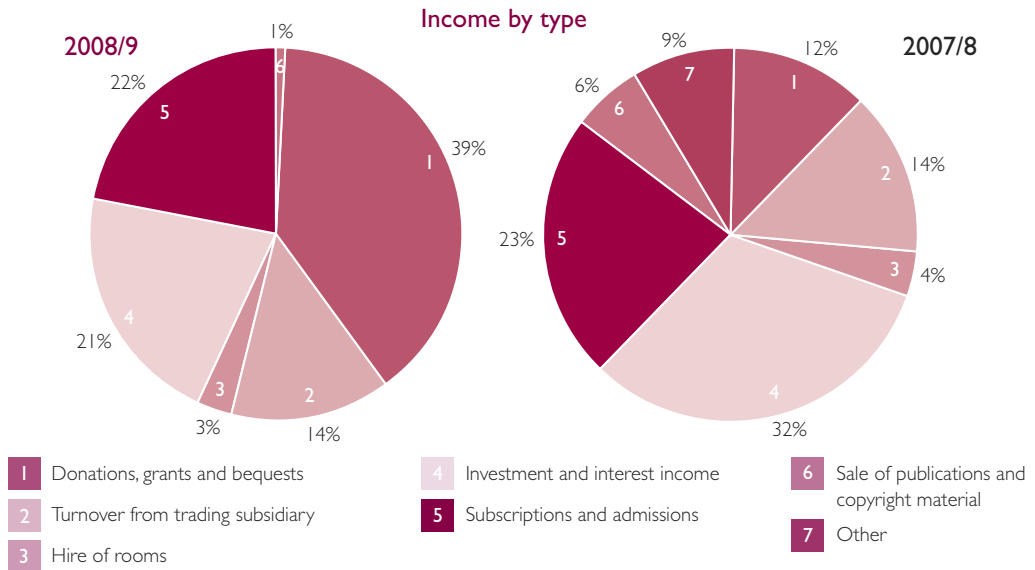
- We undertook detailed planning for the Making History development campaign to underpin the Society's fourth century at the heart of the nation's heritage.

# Use of funds

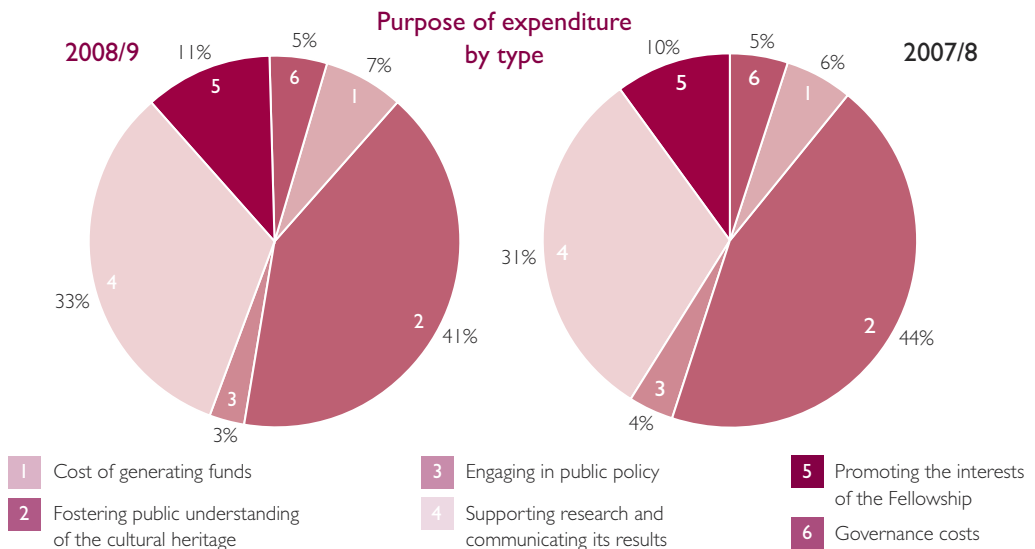
We receive no direct support from public funds. Instead, the income to support the Society's charitable purposes comes mainly from the subscriptions paid by

some 2,800 Fellows, from gifts, grants and legacies and from the income we derive from investment returns on the Society's reserves.

The following information is derived from the fully audited Report of Council and Financial Statements for 2008/9, copies of which are available on the Society's website ([www.sal.org.uk/history/reportandfinancial/](http://www.sal.org.uk/history/reportandfinancial/)).



The total income for 2008/9 was £1.9m, including a grant from the HLF to fund the *Making History* touring exhibition and a large bequest. If these two items were to be removed from the chart above, the percentage splits of income would be broadly the same as in 2007/8.



In 2007/8 extra resources were allocated to the 'Fostering public understanding' objective (for the preparation of the *Making History* touring exhibition), and in 2008/9 this area of expenditure included the cost of touring the exhibition. The apparent increased spending in 2008/9 on the 'Supporting research and communicating its results' objective is due to the cost of preparing plans for the proposed library refurbishment.

# Fostering public understanding of the cultural heritage

## *Making History*

Following the success of the Society's special tercentenary exhibition, *Making History: Antiquaries in Britain, 1707–2007*, shown at the Royal Academy of Arts, London, in the autumn of 2007, the Society was awarded a generous grant of £297,000 by the Heritage Lottery Fund to take a new version of the exhibition – entitled *Making History: 300 Years of Antiquaries in Britain* – to four major museums and galleries around England in 2008–10.

Guest curated by David Starkey, CBE, FSA, the touring exhibition explored the creation of the national heritage over 300 years using objects from the Society's library, archives and museum collections, which together form a timeline that illustrates the making of British history. Uniquely



for a national touring exhibition, the national narrative was amplified at each stage of the tour by a complementary display of objects provided by the

Society and the host institution to illustrate regional milestones in the discovery, recording, preservation, interpretation and communication of our past.

Venue	Dates
Salisbury and South Wiltshire Museum, Salisbury	3 October 2008 to 3 January 2009
The Potteries Museum and Art Gallery, Stoke-on-Trent	17 January to 21 June 2009
Sunderland Museum and Winter Gardens, Sunderland	11 July to 4 October 2009
The Collection: Art and Archaeology in Lincolnshire, Lincoln	16 October 2009 to 3 January 2010

Press coverage at each of the hosting venues was full of praise for the touring exhibition. *The Sunderland Echo* called the show 'absolutely fascinating'.



Among projects supported by the Society through the Morris Fund was the restoration of this rare set of Charles I Royal Arms at St Michael, Great Moulton, Norfolk, shown here before and after conservation.

The touring exhibition introduced the Society's collections to new audiences and created new partnerships with the host museums. Visitor figures for the four-stage tour (spanning 3 October 2008 to 4 January 2010) were over 151,000 (by comparison, the three-month tercentenary exhibition at the Royal Academy in London attracted 39,500 individual visits). At each venue, visitor numbers were significantly greater than for the equivalent period in the previous year (Salisbury + 77 per cent; Stoke-on-Trent + 29 per cent; Sunderland + 14 per cent; Lincoln + 33 per cent).

Guest Curator David Starkey gave a keynote lecture at each venue, while the host museums mounted lectures, spotlight tours and local history workshops (many of them given by Fellows of the Society based in the locality), along with craft and heritage events for families and children. A full record of the *Making History* programme can be viewed on the *Making History* website ([www.sal.org.uk/makinghistory](http://www.sal.org.uk/makinghistory)), which also contains images and detailed notes on all the exhibits.

### **The Burlington House Cultural Campus**

Established in September 2006, the Burlington House Cultural Campus is an initiative to improve public understanding of the work of the Learned Societies based around the Burlington House Courtyard (Antiquaries, Astronomers, Chemists, Geologists, the Linnean and the Royal Academy of Arts) and to celebrate links between the humanities and the sciences. The Society played a major role in organizing campus lectures in 2008/9, which included *Under the Volcano: Sir William Hamilton and Mount Vesuvius*, given by Chris Kilburn (University College London) and Jill Cook FSA (British Museum) and *Two Hundred Years of Evolution: celebrating Charles Darwin in 2009* by Janet Browne (Harvard University).

### **Kelmscott Manor**

Kelmscott Manor, the country home of William Morris, FSA, pioneer conservationist and leader of the English Arts and Crafts movement, is maintained by the Society as a visitor attraction. Opening the Manor involves a careful balance between access and conservation, but last year our decision to extend Saturday opening from eight half-days to

twelve full Saturdays contributed to a 24 per cent rise in visitors (to 15,000 for the season).

The Old Kitchen was open to the public for the first time, enabling the ground floor to be properly understood as a whole, with the kitchen and scullery to one side of the Screens Passage and the Old Hall to the other. The opening of the Old Kitchen is the first stage in a plan to open the entire Manor to visitors, enabling some rooms to be used for displays of Morris-related material from the Society's collections at Burlington House.

### **Supporting conservation**

The Society gives grants for the conservation of fixtures and fittings in historic buildings (mainly churches) through its Morris Fund, which was formed in 1939 at the bequest of May Morris as a memorial to her parents, William and Jane Morris. Thirty-one applications were considered (twenty-two in 2007/8) and £14,000 disbursed in grants. Among projects supported by the Society was the restoration of historic painted panels bearing the Royal Arms at West Worlington, Devon, and at Great Moulton, Norfolk.

# Engaging in public policy

## Facilitating public debate

From its position of independence from government, the Society continues to lead and facilitate public debate on heritage protection, presentation and understanding in the UK and internationally.

When speaking on key issues of policy and delivery, the Society is able to draw on the knowledge and expertise of an international Fellowship of some 2,800 individuals, many of whom are directors or curators of national museums, libraries and archives, chief executives of heritage bodies, directors and trustees of heritage charities, senior academics, members of parliament and well-known authors and journalists.

## Speaking for the sector

The Society's growing emphasis on public engagement in both national and international issues is reflected in its fortnightly e-mail bulletin *Salon*, which is seen as an authoritative source of information on developments in policy, funding and research. *Salon* served as the mouthpiece for the heritage community on a number of key issues, reporting on opposition to cuts in valued

research services at The National Archives and at the Courtauld Institute, on the rise and fall of the Heritage Protection Bill, on the future of Stonehenge and on the results of the 2008 Research Assessment Exercise, which is used to rank the research outputs of UK universities and allocate research funding.

## Parliamentary affairs

The Society provides a base for meetings of The Archaeology Forum (TAF), the body that represents UK archaeology in the policy sphere and whose membership is made up of the UK's leading archaeological organizations. In addition, the Society hosted the TAF keynote seminar on the draft Heritage Protection Bill, *'The Bill and Beyond'*, in early October 2008.

The Society is a member of the advisory group that regularly briefs members of the UK's All-Party Parliamentary Archaeology Group (APPAG), several of whose members are Fellows, including the Chairman, Professor Lord Renfrew of Kaimsthorn.

Over the course of 2008/9 the Society gave evidence to

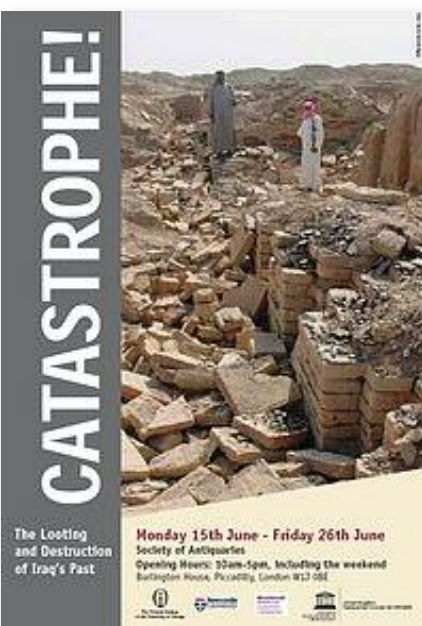


Parliamentary Select Committee Inquiries into drafts of the Marine Bill and the Cultural Property (Armed Conflicts) Bill.

We also responded to English Heritage consultations on the Stonehenge World Heritage Site Management Plan and its associated Environmental Improvements, including plans to relocate the visitor centre and close the A344 road to traffic.

In addition, the Society took part in the Department of Culture,

The Society supports the plans of English Heritage to move the existing visitor centre at Stonehenge, to close the A344 road, which cuts through the site (left), and restore the Stonehenge landscape, reconnecting the Avenue to the stone circle (right). (Photographs: © English Heritage)



Media and Sport's consultation on 'World Heritage for the Nation: Identifying, Protecting and Promoting our World Heritage'.

On behalf of Council the President also wrote to Government ministers in 2009 to express the sector's concerns about the impact of economic recession on archaeology and the provision of local authority historic environment services.

In June 2009 the Society hosted a special exhibition – entitled

*Catastrophe! The Looting and Destruction of Iraq's Past* – on behalf of the UK National Commission for UNESCO (in association with Newcastle University and the North East Regional Museums Hub).

The exhibition aimed to raise awareness of the importance of protecting cultural property in time of armed conflict and to press for long-promised UK ratification of the 1954 Hague Convention for the Protection of Cultural Property in the Event of Armed Conflict.

# Supporting research and communicating its results

Naturalistic blackbird from Colchester (Middleborough), from the third volume of the *Roman Mosaics of Britain* corpus.

## Supporting research

The Society reviewed its grant-giving objectives in 2009 and agreed that it should:

- focus primarily on supporting research into material culture;
- be agile in responding to applicants' needs rather than adopting a prescriptive policy;
- maintain and promote the Society's distinctiveness, in particular by supporting independent researchers who are not eligible for mainstream research council funding.

## Research grants

In 2009 the Society was notified of a generous bequest of £260,000 from the late Marion Gilchrist Wilson, FSA, to be used for supporting research and publication. Half of this sum has been allocated to endowing the Minor Grants scheme. This will add to the £60,000 a year (3 per cent of our resources) that the Society allocates to funding research projects and travel.

Applications to the value of £168,386 were received this year, continuing the steady rise in demand for support from the Society that began in 2006 when we increased the maximum individual award to £5,000.

Fourteen projects were selected for support, including the excavation of a Neolithic site in Guernsey, the Stonehenge Riverside Project, a survey of prehistoric stone settings on Exmoor; work on domestic finds from excavations at Pompeii, and research on a fifteenth-century royal child burial (that of Anne Mowbray, Duchess of York).

## Research seminars and weekly meetings

In 2009 the Society hosted seminars celebrating two milestones in the development of British archaeology. In February 2009, 'Wroxeter 150: Past, Present and Future' marked the 150th anniversary of the re-discovery of the Roman city of Wroxeter and



Sir John Evans (1823–1908), former President of the Society (1885–92).

the opening of one of the earliest archaeological visitor attractions in Britain. In June, 'John Evans and Human Antiquity' commemorated the lecture given to the Society by Sir John Evans, FSA, in June 1859 that provided (six months prior to the publication of Darwin's *Origin of Species*) the first scientific proof of the great antiquity of our human ancestors.

The Society also hosted thirty-three lectures during 2008/9, presenting the results of recent research, including one on Hadrian's Wall jointly hosted by the Society of Antiquaries of Newcastle upon Tyne, in Newcastle upon Tyne, in March 2009.

## Publications

Thanks to a partnership with Cambridge University Press, we launched an online version of the *Antiquaries Journal*, our peer-reviewed, multi-period, multi-disciplinary international journal at the Anniversary Meeting on 23 April 2009. The launch issue featured a paper on the important excavations at Stonehenge of April 2008, directed by the President and our Vice-President, Professor Tim Darvill. The short interval between fieldwork and publication illustrates the speed



Research grants given in the past came to fruition during 2008/9, with the publication of several Society-funded projects, including 'Parishioners of St Bride's in the eighteenth and nineteenth centuries' (supported through a grant stream from the Headley Trust), aerial reconnaissance of ancient desert sites in Jordan, the first comprehensive survey of Suffolk church chests, archaeological survey of the island of Sark, geophysical survey and excavation of the Moot Hill and royal palace of Scone, Scotland, magnetometry survey of the Roman military base at Dura Europos, Syria, and 'Styling the Body: toilet instruments in Roman Britain'.

with which the Society can now bring important research into the public domain with two online issues of the *Journal* a year. Two major monographs were published during 2008/9. The first was *Volume III: South-east Britain in the corpus of Roman Mosaics of Britain*, by David Neal and Stephen Cosh, covering some of the country's most impressive mosaics. This was followed by *Hill Hall: a singular house devised by a Tudor intellectual*, by Paul Drury with Richard Simpson, initiating a new series of joint Society of Antiquaries and English Heritage research monographs based on major excavations and architectural studies.

### Library and museum collections

Donations of £3,850 were received in 2008/9 towards the cost of book purchases, binding

and conservation, and 299 books were given by seventy-eight donors. The library acquired 805 monographs through purchase, gift or exchange and 879 issues of 344 periodical titles. The number of personal visitors to the library was 2,328 (two-thirds Fellows and a third non-Fellows), of which 143 visited for the first time. The library handled more than 2,500 research enquiries and requests for photographs of materials in the collections.

The Society loaned several of its important historic pictures to three major exhibitions associated with the 500th anniversary of Henry VIII's accession to the throne in 1509:

- The portraits of *Mary I* by Hans Eworth and *Jane Seymour* were loaned to Hampton Court Palace for its exhibition *Henry VIII:*

*Heads and Hearts*, which attracted 150,000 visitors.

- Four paintings and a watercolour drawing were loaned to the British Library, for its exhibition *Henry VIII: Man and Monarch*, which was seen by 67,757 visitors.

- The engraving *Encampment of the British Forces near Portsmouth, 1545* was loaned to the Royal Armouries for its exhibition *Henry VIII: Dressed to Kill* at the Tower of London (1,052,100 visitors).

In addition, the Society's *Portrait of Jan van Scorel*, by Anthonis Mor van Dashorst, was loaned to the Centraal Museum, Utrecht, The Netherlands, for its exhibition called *Scorel's Glory: How a Utrecht-based Painter brought the Renaissance to the North*, which attracted 30,000 visitors.



Far left: Part of the British Library exhibition *Henry VIII: Man and Monarch*.

Left: *Portrait of Jan van Scorel* at the Centraal Museum, Utrecht.

# Future plans

## The Making History Campaign

The Society aims to raise new funds to improve access to its assets and resources, as part of its mission to encourage greater public understanding of the heritage. A concerted fundraising effort – The Making History Campaign – is now under way. This aims to raise £6 million for two capital projects of vital importance to the Society's future: essential improvements to the library and its services, and the development of a centre for learning at Kelmscott Manor:

Of that sum, £2.7 million is needed to restore the library at Burlington House and provide improved study space and IT facilities, to make extra shelf space and to create a dedicated conservation studio. £3.3 million is needed at Kelmscott Manor to restore the range of historic barns and byres that surround the house, providing an opportunity to make better use of these buildings and create a learning centre, exhibition facilities and improved visitor amenities. An application is being prepared to the Heritage Lottery Fund for funding to support this work.

## Online services

Work is also under way to digitize the Society's historic journals (*Archaeologia*, the *Proceedings* and the *Antiquaries*

Chair of the Making History Campaign, Dr David Starkey, FSA, describes the Society's plans to raise £6m as 'not an indulgence: rather it is to ensure this astonishing heritage is preserved, that it survives and continues to be used'.



*Journal*), thus providing online access to a resource that embraces 300 years-worth of antiquarian achievement and endeavour, including many of the studies that underpin our understanding of key monuments, buildings and works of art, from Stonehenge and Avebury to Westminster Cathedral and the Houses of Parliament.

Launched in October 2001, *Salon* reached its 200th issue in 2008; plans are being developed to turn *Salon* into a daily news service, delivered via the Society's website home page, and to make it easier to search and find material in the *Salon* archive.

## Research and publications

Two long-standing projects involving the publication of core reference books for the study of heraldry will reach fruition with

the launch (in November 2009) of *Heraldic Badges in England and Wales*, by Michael Powell Siddons, FSA, and *The Dictionary of British Arms Volume III*, by Thomas Woodcock, FSA, and Sarah Flower.

Currently in preparation is a multi-author work on *Westminster Abbey Chapter House*, which is scheduled for publication in May 2010, to coincide with the completion of a major programme of restoration at the Chapter House funded by English Heritage.

Also forthcoming in 2010 is the fourth and final volume of *Roman Mosaics of Britain*, by David Neal and Stephen Cosh, covering Wales and the west of England.

The Society holds a collection of eighty-four paintings dating from

the fifteenth to the early twentieth centuries, including many outstanding individual works. Research, editorial work, conservation and photography are under way with a view to publishing a definitive catalogue with Yale University Press in the near future.

### Public policy

Working with partner organizations in the heritage sector, the Society will continue its active support for enactment of Heritage Protection Reform, for an acceptable replacement for Planning Policy Guidance notes 15 and 16, for environmental and

presentational improvements to Stonehenge, and for UK ratification of such international treaties as the 1954 Hague Convention for the Protection of Cultural Property in the Event of Armed Conflict and the 2001 UNESCO Convention on the Protection of the Underwater Cultural Heritage.

The Society will also support those Fellows outside the UK in their own advocacy on behalf of the heritage, and their participation in relevant government consultations.

Improved environmental conditions, user access and facilities are planned for the Society's library.

Restoring Kelmscott Manor's farm buildings will provide new facilities for learning, interpretation and exhibitions.



## ABOUT THE SOCIETY

Founded in 1707, the Society of Antiquaries is charged by its Royal Charter of 1751 with 'the encouragement, advancement and furtherance of the study and knowledge of the antiquities and history of this and other countries'.

The Society is an elected college of some 2,800 Fellows, drawn from scholars and practitioners working in archaeology, architectural and art history, museum, library and archive curatorship, conservation and cultural resource management together with historical, ecclesiastical, heraldic, musical and linguistic study – the common theme being the focus on the material remains of the past.

Our premises at Burlington House are home to the UK's leading research library for the study of the material past and to important collections of antiquities, manuscripts and paintings, as well as housing meeting rooms and the administrative offices of the Society.

The Society has Accredited Museum status for its historic collections at Burlington



House and for its collections at Kelmescott Manor in Oxfordshire, the former country home of William Morris, Fellow, pioneer conservationist and leader of the English Arts and Crafts movement.



**SOCIETY OF  
ANTIQUARIES  
OF LONDON**

**Society of Antiquaries of London**

Burlington House  
Piccadilly  
London W1J 0BE

Tel: 020 7479 7080  
Fax: 020 7287 6967

Email: [admin@sal.org.uk](mailto:admin@sal.org.uk)  
Website: [www.sal.org.uk](http://www.sal.org.uk)

Charity Registration No: 207237

ISSN 2040-4220

Designed by Michael Keates

Printed by Streamline Press Ltd, Leicester



### Royal Patron

HRH The Duke of Gloucester

### Royal Fellows

HM Queen Elizabeth II  
HRH The Prince of Wales  
HM The Queen of Denmark